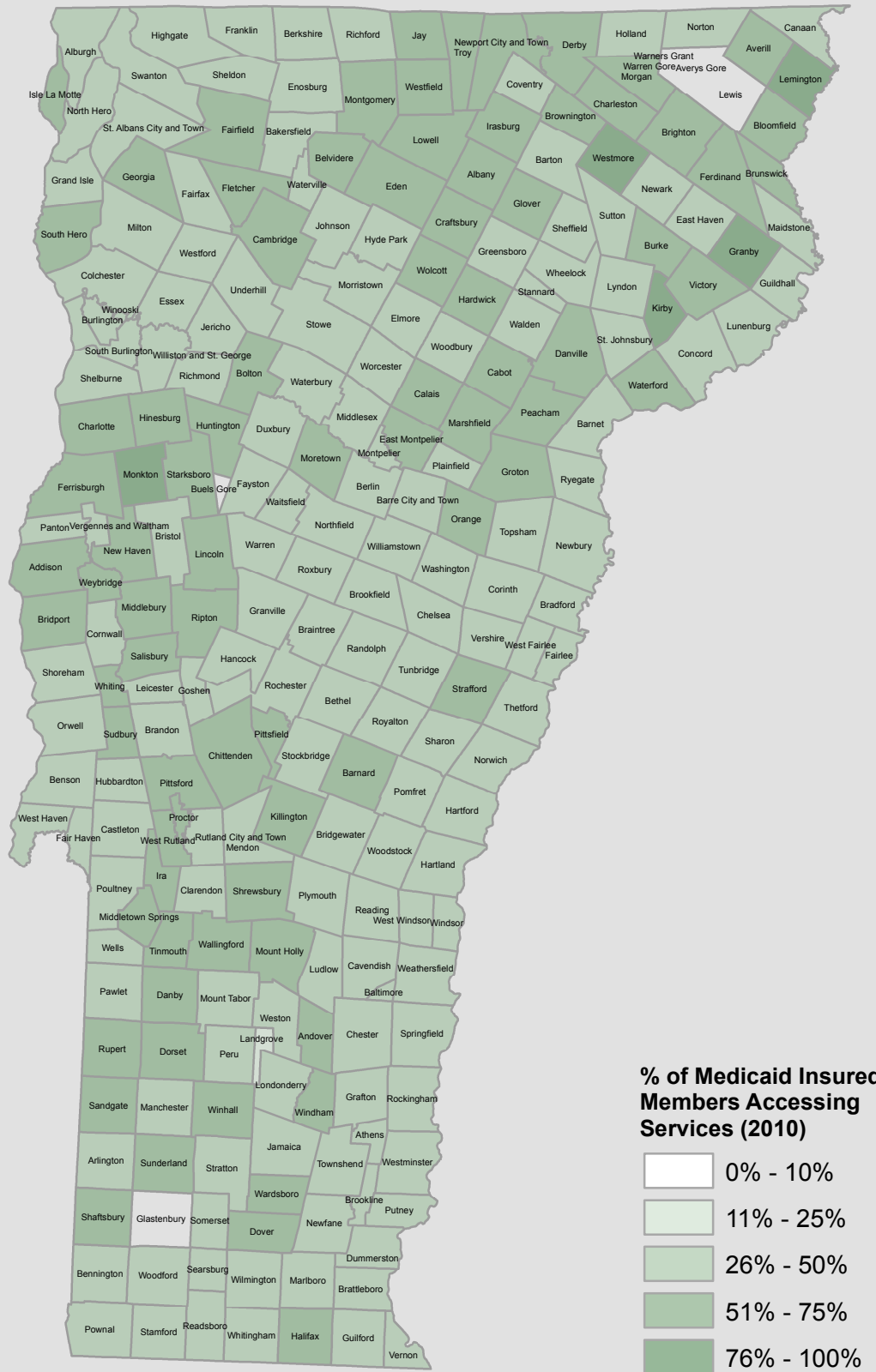


C:\Proj-19\AIM\13-052-Dental Health Access\Data\MapDocuments\Ppresentations\G\MCB_102413\Map 1a_Access_as_Consumer_Utilization_Medicaid.mxd, ch 10/23/13



Sources: Medicaid (2010); Town Boundaries: VCGI

Dental Access: Utilization

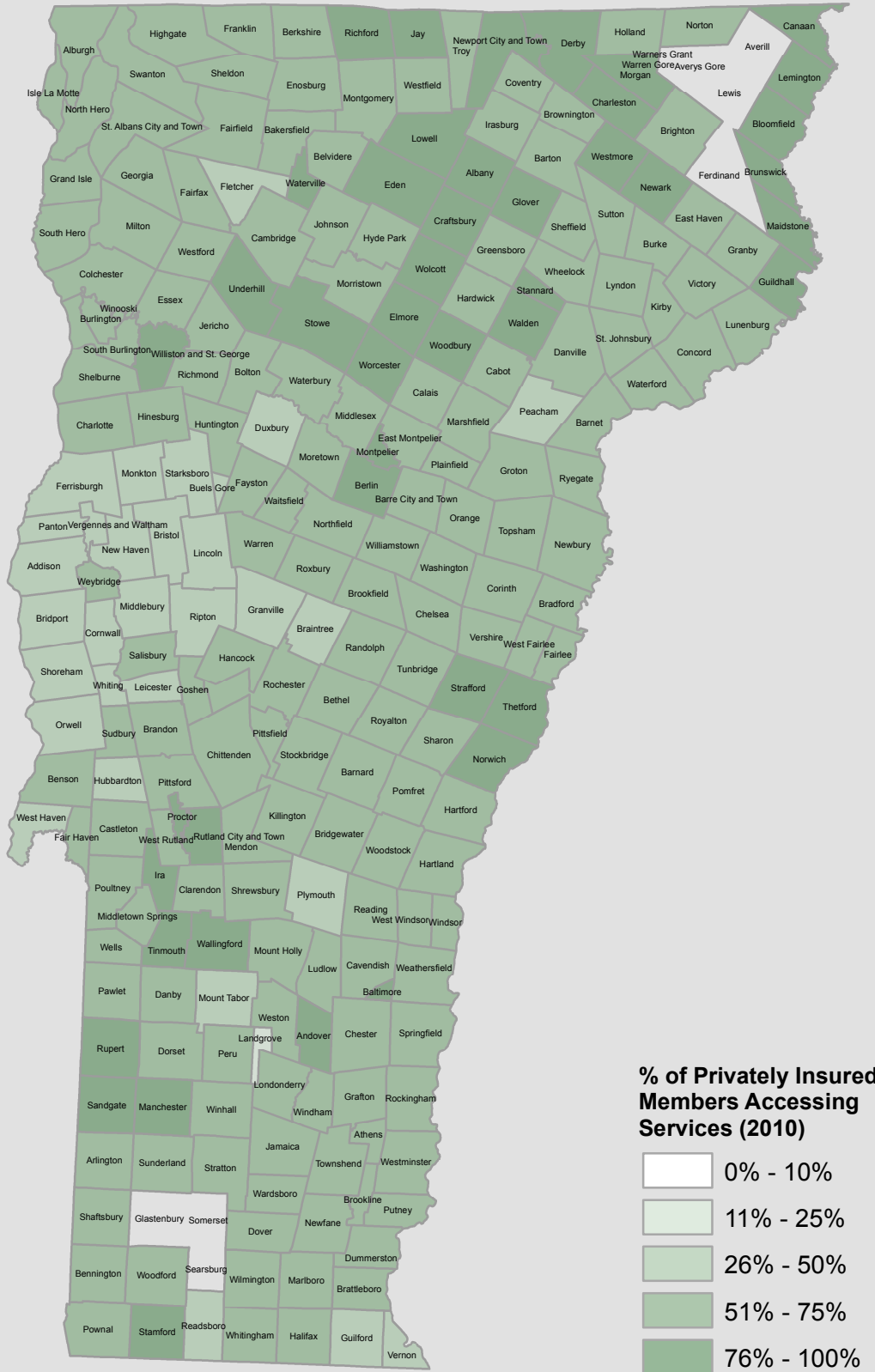
STONE ENVIRONMENTAL INC

**Access as Consumer
Utilization, Medicaid**

**Vermont Dental Landscape
Green Mountain Care Board**

Map # 1a

C:\Proj-13\AIM\13-052-Dental Health\AccessData\MapDocuments\Ppresentations\G\MCB_102413\Map 1b_Access_as_Consumer_Utilization_DeltaDental.mxd, och 10/23/13



Sources: Delta Dental (2010); Town Boundaries: VCGI

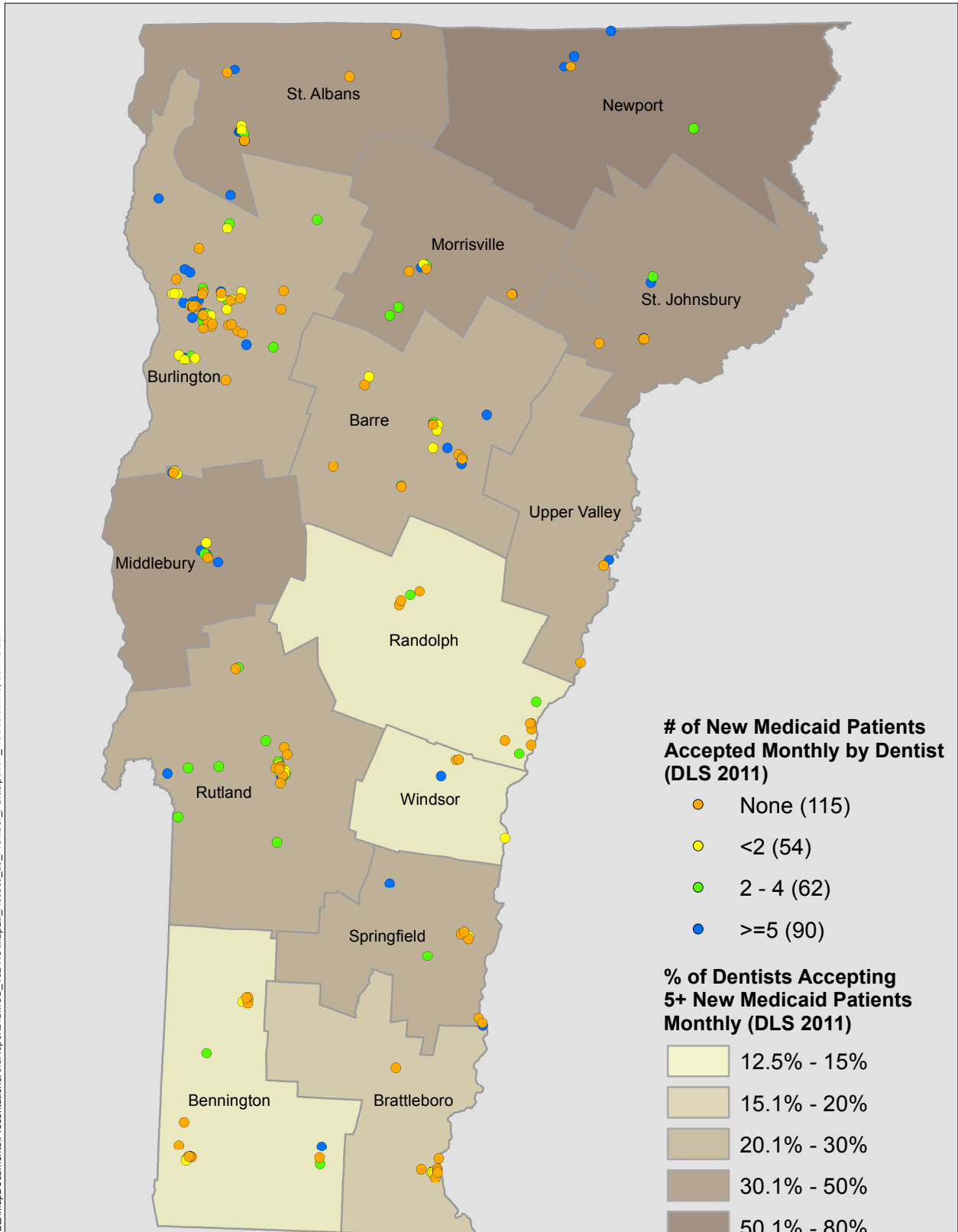
Dental Access: Utilization

 **STONE ENVIRONMENTAL INC**

**Access as Consumer
Utilization, Delta Dental**

**Vermont Dental Landscape
Green Mountain Care Board**

Map #1b



Sources: Vermont Dental Licensing Survey (DLS 2011); Health Service Area (HSA)
 Boundaries: Vermont Department of Health

Dental Access: Provider Participation

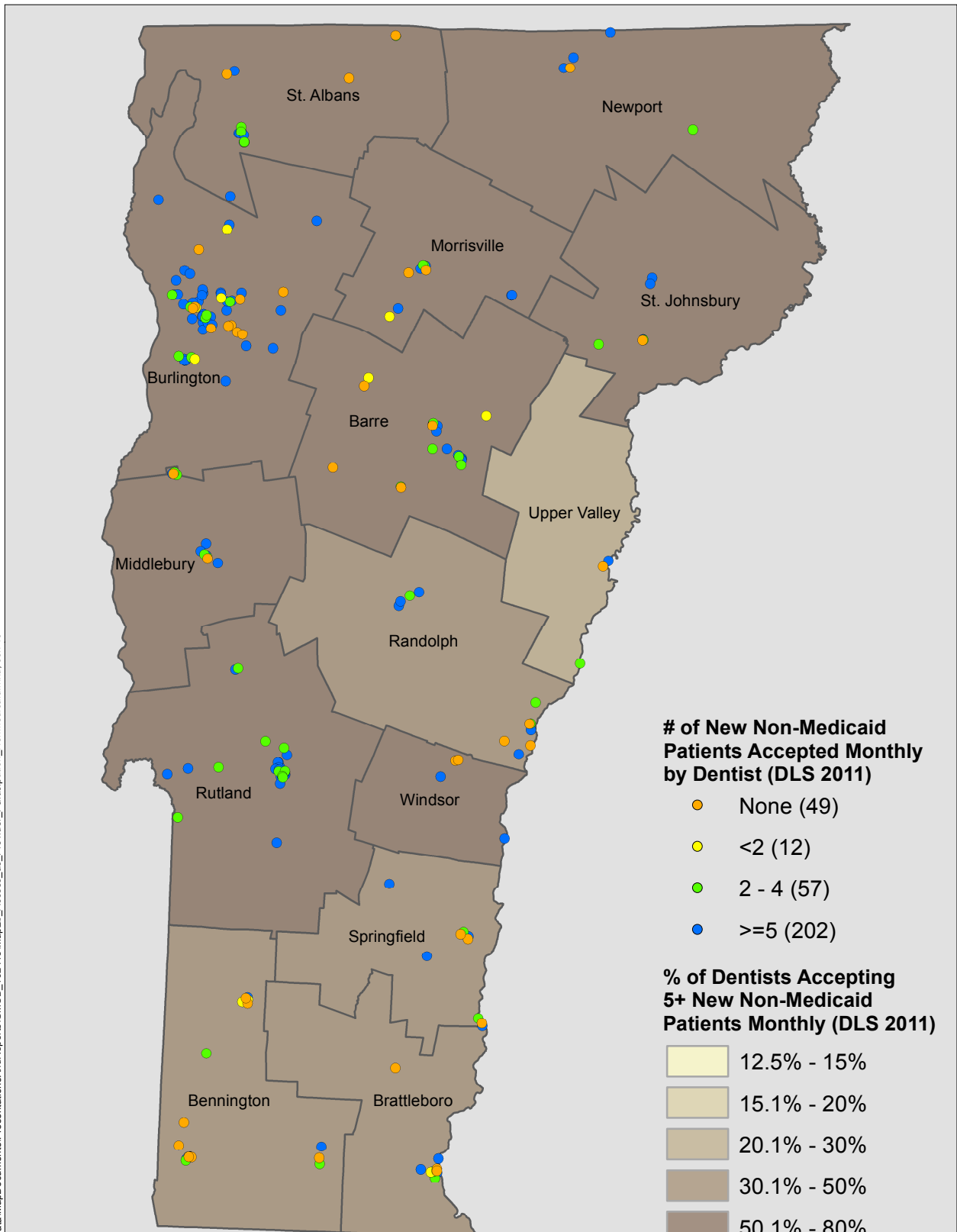


STONE ENVIRONMENTAL INC

Access to Dentists
 Medicaid Patients (HSA)

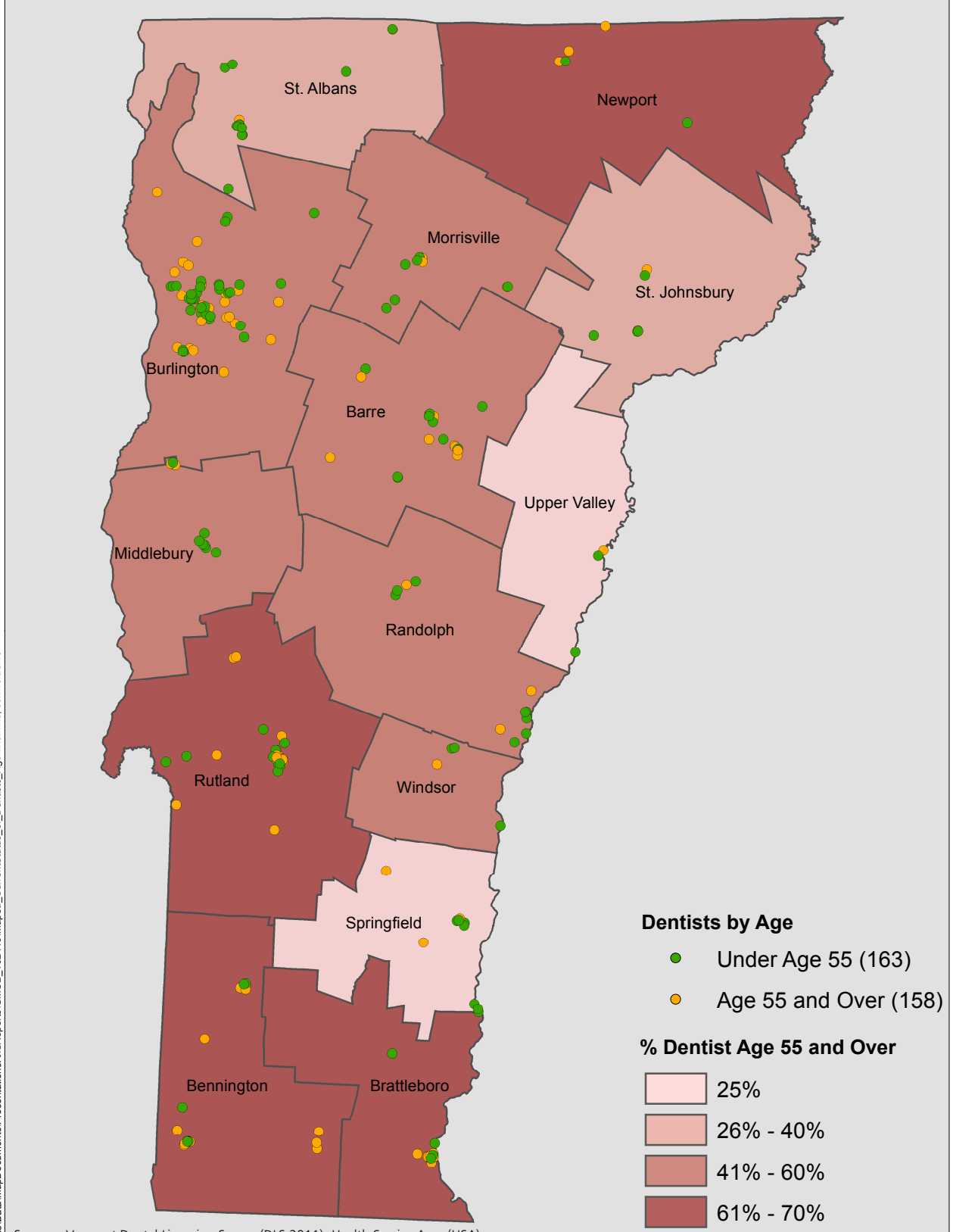
Vermont Dental Landscape
 Green Mountain Care Board

Map #2a



Sources: Vermont Dental Licensing Survey (DLS 2011); Health Service Area (HSA)
 Boundaries: Vermont Department of Health

Dental Access: Provider Participation



Sources: Vermont Dental Licensing Survey (DLS 2011); Health Service Area (HSA)
 Boundaries: Vermont Department of Health

Dental Workforce Status



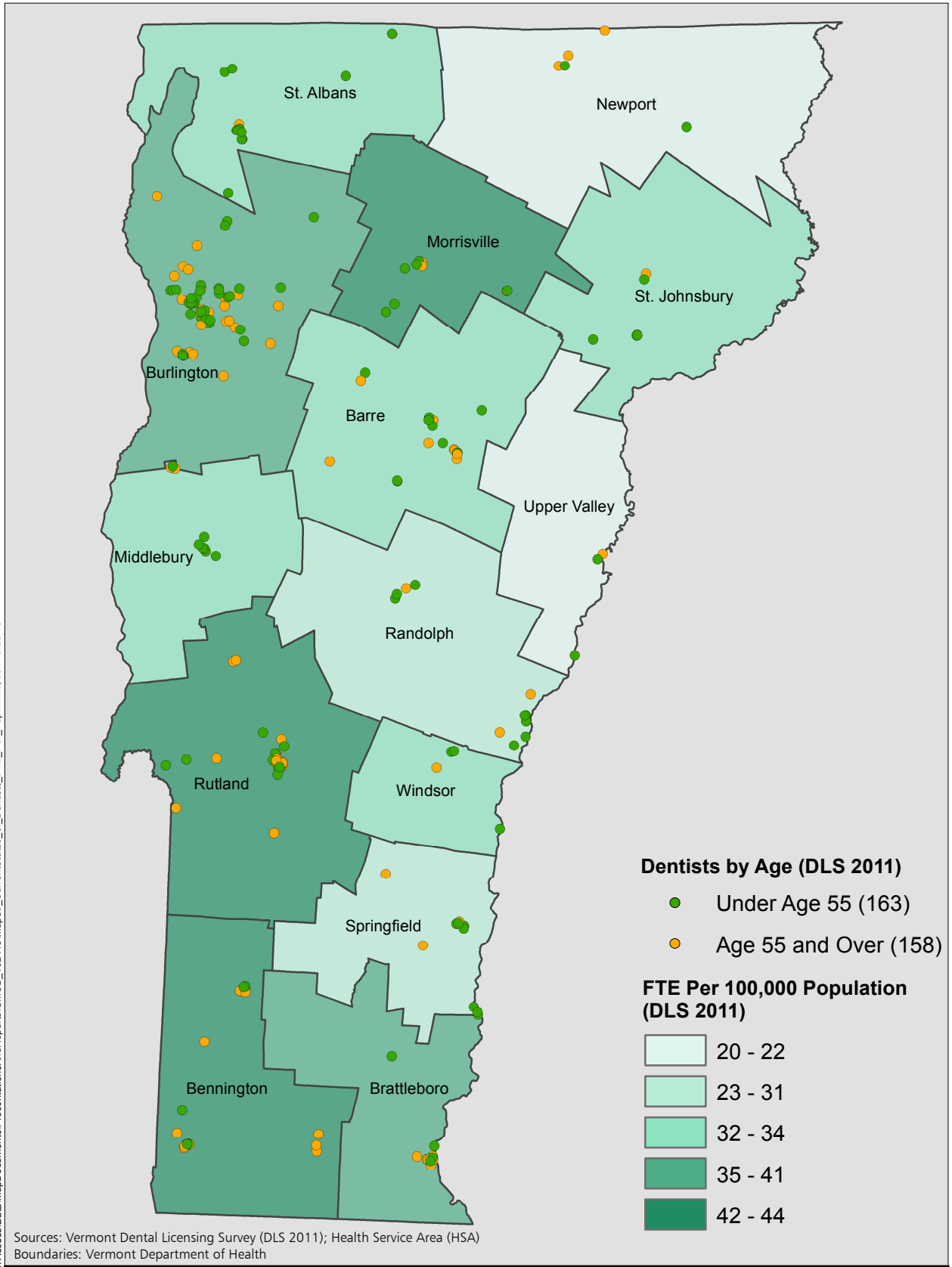
STONE ENVIRONMENTAL INC

**Current Status and Distribution
of Dentists by Age (HSA)**

Vermont Dental Landscape
Green Mountain Care Board

Map #3a

C:\Proj-19\AIM13-052-Dental Health Access\Data\MapDocuments\Presentation\AndReports\GMCB_102413\Map3a_CurrentStatus_of_Dentists_Age.mxd, ch 10/23/13



C:\Proj-19\AIM\13-052-Dental Health Access\Data\MapDocuments\Presentation\Reports\GMCB_102413\Map3b_CurrentStatus_of_Dentists_FTE_Per_Popn.mxd, cch 10/23/13

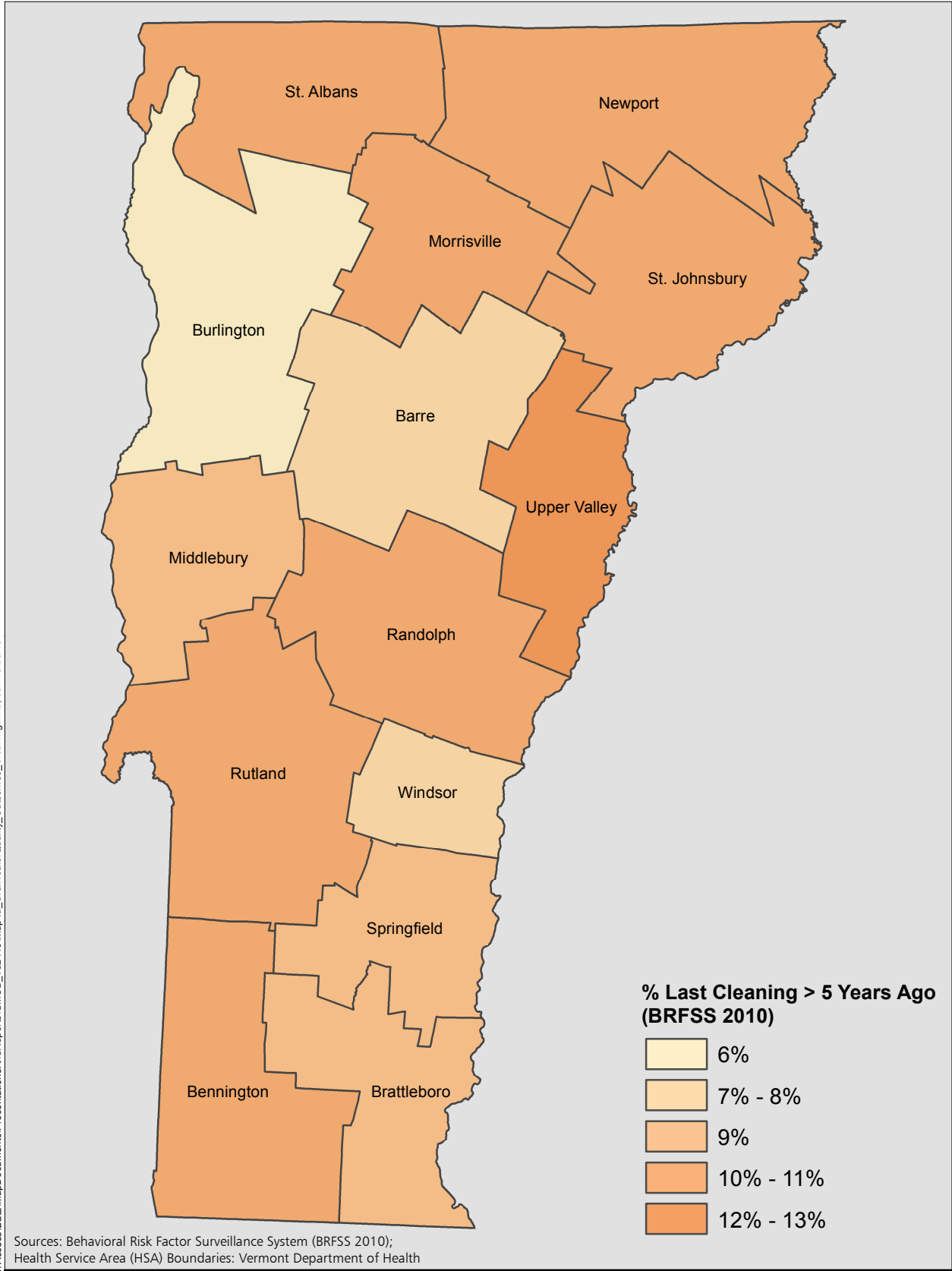
Dental Workforce Distribution

 **STONE ENVIRONMENTAL INC**

Status and Distribution of
Dentists, FTE Per 100,000 (HSA)

Vermont Dental Landscape
Green Mountain Care Board

Map #3b



Sources: Behavioral Risk Factor Surveillance System (BRFSS 2010);
 Health Service Area (HSA) Boundaries: Vermont Department of Health

O:\Proj-19\AIM13-052-Dental Health Access\Data\MapDocuments\Presentation\Reports\GVCB_102413\Map4a_OralHealthQuality_Outcomes_Cleaning.mxd, cch 10/23/13

Oral Health Quality

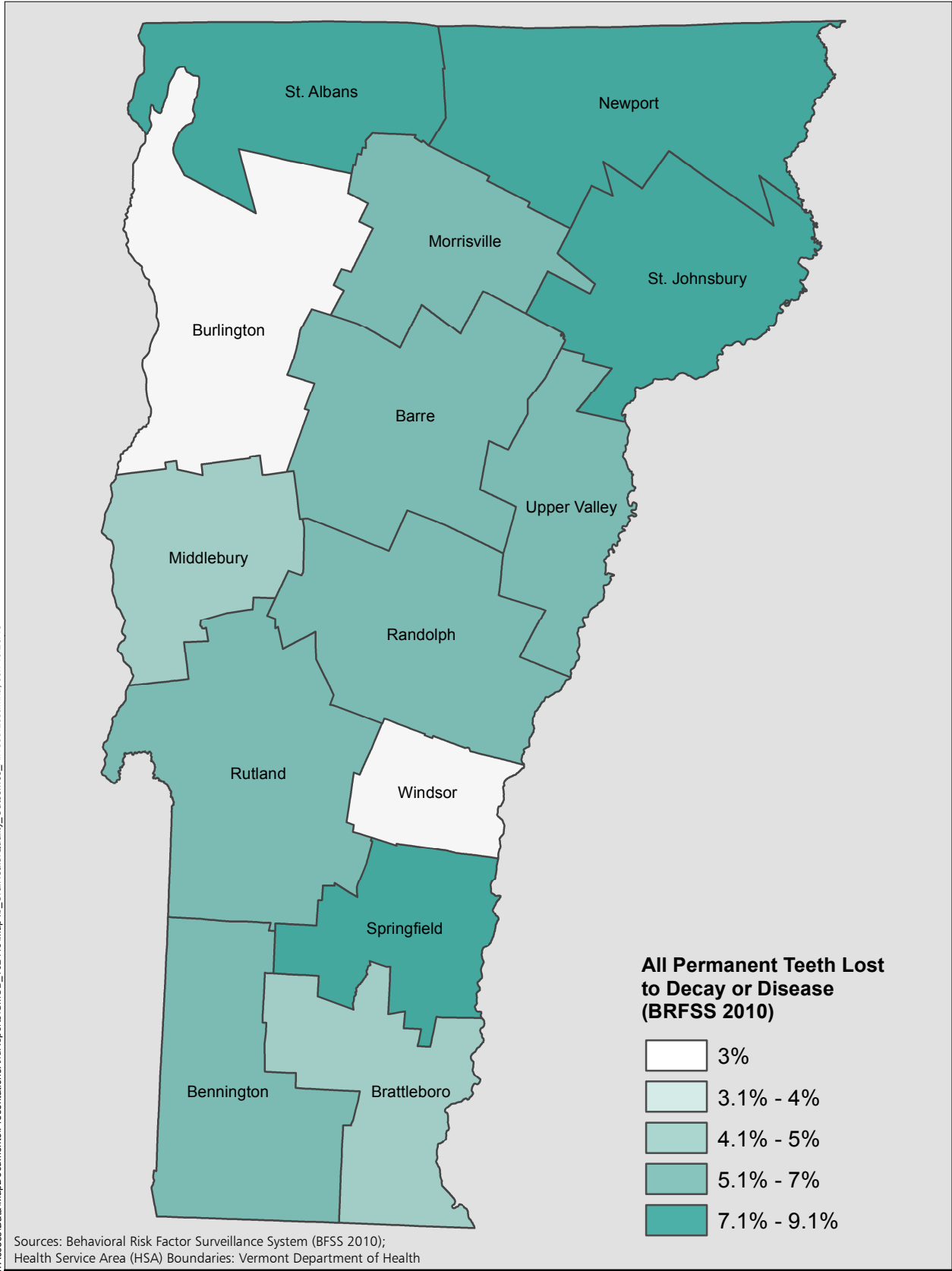


STONE ENVIRONMENTAL INC

**Health Quality and Outcomes,
 Last Cleaning > 5 Years (HSA)**

Vermont Dental Landscape
 Green Mountain Care Board

Map #4a



Sources: Behavioral Risk Factor Surveillance System (BRFSS 2010);
 Health Service Area (HSA) Boundaries: Vermont Department of Health

C:\Proj-19\AIM\13-052-Dental Health Access\Data\MapDocuments\Presentation\Reports\GVCB_102413\Map4b_OralHealthQuality_Outcomes_AllTeethLost.mxd, cch 10/23/13

Oral Health Outcomes

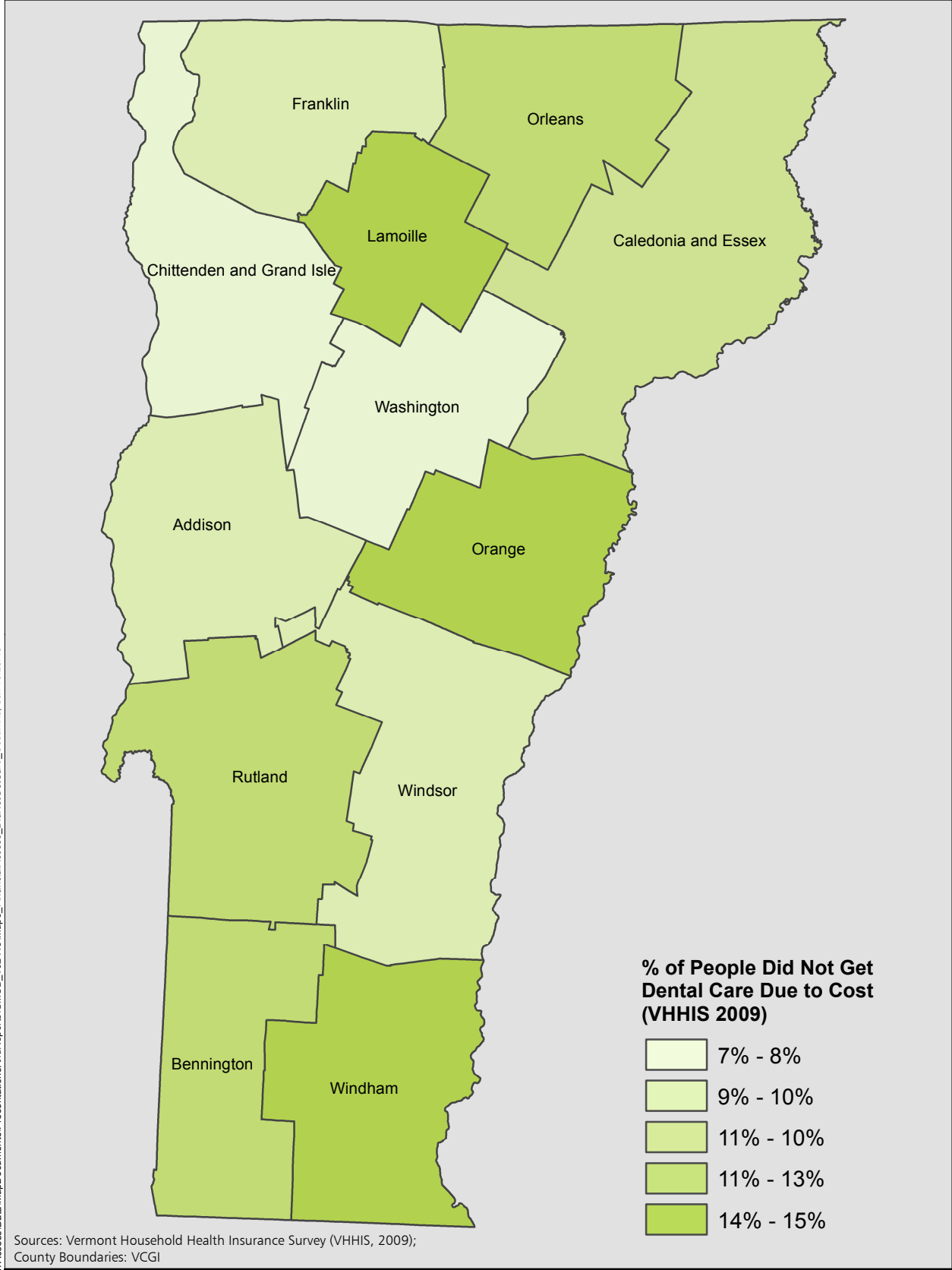


STONE ENVIRONMENTAL INC

Quality and Outcomes, All Teeth Lost to Decay/Disease (HSA)

**Vermont Dental Landscape
Green Mountain Care Board**

Map #4b



Sources: Vermont Household Health Insurance Survey (VHHIS, 2009);
 County Boundaries: VCGI

O:\Proj-19\AIM13-052-Dental Health Access\Data\MapDocuments\PresentationAndReports\GVCB_102413\Map5_FinancialAccess_DidNotGetCare_Cost.mxd, csh 10/23/13

Dental Financial Access



STONE ENVIRONMENTAL INC

**% of People Did Not Get
Dental Care Due to Cost**

**Vermont Dental Landscape
Green Mountain Care Board**

Map #5